



The Scottish Parliament
Pàrlamaid na h-Alba

SPICe

The Information Centre
An t-Ionad Fiosrachaidh

SPICe Briefing
Pàipear-ullachaidh SPICe

Labour market update: September 2021

Fraser Murray

This infographic looks at the latest labour market data for Scotland from the Office for National Statistics.



15 September 2021
SB 21-62i

Contents

(Untitled)	3
(Untitled)	4
Data	5



SPICe The Information Centre
An t-Ionad Fiosrachaidh

SB 21-62i

Labour market update: September 2021

This update provides an overview of the Scottish labour market from the latest regional labour market statistics and UK labour market statistics published by the Office for National Statistics (ONS).

Data covers
May-Jul 2021

Unemployment (16+)

Number of unemployed individuals as a proportion of the total number of economically active people (unemployed + employed).

London	6.0%
North East	5.3%
West Midlands	5.1%
Yorkshire, & The Hum	4.7%
North West	4.7%
England	4.6%
United Kingdom	4.6%
East Midlands	4.4%
Scotland	4.3%
Wales	4.2%
South East	4.1%
N. Ireland	4.0%
East	3.8%
South West	3.3%

Across
the UK
seasonally
adjusted

Employment (16-64)

Number of people in employment expressed as a percentage of all people aged 16-64.

East	78.7%
South East	78.1%
South West	77.7%
England	75.5%
United Kingdom	75.2%
East Midlands	75.0%
London	74.9%
Wales	74.6%
West Midlands	74.2%
Scotland	74.1%
Yorkshire, & The Humb.	73.3%
North West	73.1%
North East	72.2%
N. Ireland	71.2%

Inactivity (16-64)

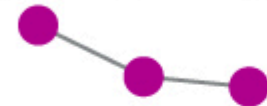
Number of people economically inactive expressed as a percentage of all people aged 16-64.

N. Ireland	25.7%
North East	23.9%
North West	23.2%
Yorkshire, & The Humb.	23.0%
Scotland	22.5%
Wales	22.0%
West Midlands	21.7%
East Midlands	21.4%
United Kingdom	21.1%
England	20.8%
London	20.3%
South West	19.6%
South East	18.5%
East	18.3%

Headline
figures
seasonally
adjusted

May-Jul 2020 Feb-Apr 2021 May-Jul 2021

4.9% 4.4% 4.3%



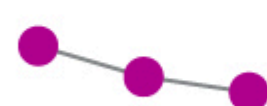
Women

4.3% 4.0% 4.0%



Men

5.4% 4.8% 4.5%



May-Jul 2020 Feb-Apr 2021 May-Jul 2021

73.6% 73.9% 74.1%



70.9% 72.2% 72.1%



76.4% 75.7% 76.1%

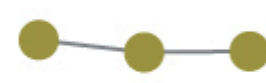


May-Jul 2020 Feb-Apr 2021 May-Jul 2021

22.6% 22.7% 22.5%



25.9% 24.7% 24.8%



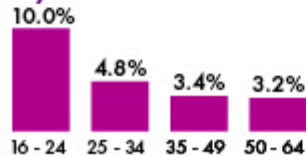
19.1% 20.5% 20.1%



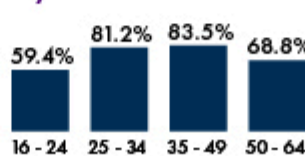
Age
Not seasonally
adjusted

(Not designated as National Statistics)

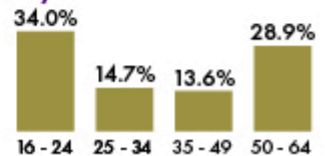
May-Jul 2021



May-Jul 2021



May-Jul 2021



Economic inactivity rates by Scottish Parliament constituency and region

All data is for - **Apr 2020 to Mar 2021**

Central Scotland

Cumbernauld & Kilsyth	37.9%
Motherwell & Wishaw	29.0%
Airdrie & Shotts	25.3%
East Kilbride	25.0%
Central Scotland	24.3%
Uddingston & Bellshill	24.2%
Scotland	23.6%
Falkirk East	22.3%
Falkirk West	20.6%
Coatbridge & Chryston	19.3%
Hamilton, Larkhall & Stonehouse	15.1%

Glasgow

Glasgow Anniesland	43.8%
Glasgow Southside	31.5%
Glasgow Maryhill & Springburn	30.8%
Glasgow Pollak	29.5%
Glasgow	25.8%
Glasgow Shettleston	24.5%
Scotland	23.6%
Glasgow Kelvin	20.6%
Glasgow Cathcart	19.3%
Rutherglen	18.7%
Glasgow Provan	17.1%

Highlands & Islands

Shetland Islands	29.9%
Skye, Lochaber & Badenoch	25.1%
Moray	24.9%
Scotland	23.6%
Caitness, Sutherland & Ross	22.0%
Argyll & Bute	21.8%
Highlands & Islands	21.4%
Inverness & Nairn	17.4%
Na h-Eileanan an Iar	14.3%
Orkney Islands	12.0%

Lothian

Edinburgh Western	29.4%
Almond Valley	27.3%
Edinburgh Central	25.9%
Linlithgow	23.9%
Scotland	23.6%
Lothian	22.9%
Midlothian North & Musselburgh	22.6%
Edinburgh Eastern	20.4%
Edinburgh Pentlands	20.2%
Edinburgh Northern & Leith	19.8%
Edinburgh Southern	18.4%

Mid Scotland & Fife

Kirkcaldy	32.4%
Cowdenbeath	27.8%
Perthshire South & Kinrossshire	25.5%
Scotland	23.6%
Clackmannanshire & Dunblane	23.0%
Mid Scotland & Fife	22.8%
Mid Fife & Glenrothes	22.7%
Stirling	21.5%
Perthshire North	21.0%
North East Fife	18.1%
Dunfermline	13.4%

North East

Dundee City West	26.1%
Dundee City East	24.1%
Angus South	24.1%
Scotland	23.6%
Aberdeenshire East	23.4%
Aberdeen South & North Kincardine	23.0%
Aberdeenshire West	22.4%
North East Scotland	22.1%
Angus North & Meams	21.2%
Aberdeen Central	20.9%
Banffshire & Buchan Coast	19.5%
Aberdeen Donside	16.9%

South Scotland

Galloway & West Dumfries	30.5%
Ayr	29.9%
Ettrick, Roxburgh & Berwickshire	27.7%
Dumfriesshire	25.9%
South Scotland	24.8%
Carrick, Cumnock & Doon Valley	24.7%
Kilmarnock & Irvine Valley	23.7%
Scotland	23.6%
Clydesdale	22.8%
East Lothian	20.4%
Midlothian South, Tweeddale & Lauderdale	18.8%

West Scotland

Cunninghame South	29.9%
Clydebank & Milngavie	28.5%
Cunninghame North	27.2%
Greenock & Inverclyde	26.8%
Eastwood	24.3%
West Scotland	23.8%
Scotland	23.6%
Renfrewshire South	22.8%
Dumbarton	21.0%
Paisley	20.4%
Strathkelvin & Bearsden	20.2%
Renfrewshire North & West	17.7%

* This data is from the resident analysis of the APS, meaning the rate is for those who live in the constituency.

* The Scotland rate used for this data is different from the earlier quoted figure as it covers a different time period.

Data

Table 1: labour market indicators rates by nation and region of the UK (%)

	Employment	Unemployment	Inactivity
East	78.7	4.6	21.2
East Midlands	75.0	4.6	20.8
England	75.5	4.1	28.5
London	74.9	5.3	23.9
North East	72.2	4.7	23.2
North West	73.1	4.7	23.0
Northern Ireland	71.2	3.3	19.6
Scotland	74.1	4.2	22.0
South East	78.1	4.4	21.4
South West	77.7	5.1	21.7
United Kingdom	75.2	4.3	22.5
Wales	74.6	4.0	25.7
West Midlands	74.2	3.8	18.3
Yorkshire and The Humber	73.3	6.0	20.3

Source: [Labour market over view, UK: September 2021](#)

Table 2: labour market indicators rates for all people in Scotland (%)

	Same quarter previous year	Previous quarter	Latest quarter
Unemployment	4.9	4.4	4.3
Employment	73.6	73.9	74.1
Inactivity	22.6	22.7	22.5

Source: [Labour market in the regions of the UK: September 2021](#)

Table 3: labour market indicators rates for women in Scotland (%)

	Same quarter previous year	Previous quarter	Latest quarter
Unemployment	4.3	4.0	4.0
Employment	70.9	72.2	72.1
Inactivity	25.9	24.7	24.8

Source: [Labour market in the regions of the UK: September 2021](#)

Table 4: labour market indicators rates for men in Scotland (%)

	Same quarter previous year	Previous quarter	Latest quarter
Unemployment	5.4	4.8	4.5
Employment	76.4	75.7	76.1
Inactivity	19.1	20.5	20.1

Source: [Labour market in the regions of the UK: September 2021](#)

Table 5: labour market indicators rates by age in Scotland (%)

	16 - 24	25 - 34	35 - 49	50 - 64
Employment	59.4	81.2	83.5	68.8
Unemployment	10.0	4.8	3.4	3.2
Inactivity	34.0	14.7	13.6	28.9

Source: [Labour market in the regions of the UK: September 2021](#)

Scottish Parliament Information Centre (SPICe) Briefings are compiled for the benefit of the Members of the Parliament and their personal staff. Authors are available to discuss the contents of these papers with MSPs and their staff who should contact Andrew Aiton on telephone number 85188 or andrew.aiton@parliament.scot.

Members of the public or external organisations may comment on this briefing by emailing us at SPICe@parliament.scot. However, researchers are unable to enter into personal discussion in relation to SPICe Briefing Papers. If you have any general questions about the work of the Parliament you can email the Parliament's Public Information Service at sp.info@parliament.scot. Every effort is made to ensure that the information contained in SPICe briefings is correct at the time of publication. Readers should be aware however that briefings are not necessarily updated or otherwise amended to reflect subsequent changes.

